



ENGINES & RECIPROCATING COMPRESSORS

Regardless of the equipment manufacturer, we perform all shop and field services to meet all compression and engine needs for our clients.

SERVICES

Complete overhauls and upgrades for engines/ compressors and gas turbines

Preventive maintenance and preservation

Troubleshooting, inspections and repairs

Zero-hour engines, compressors, turbines and pumps

Scheduled and preventive maintenance

Planning and support

Rotalign/boralign/leveling services

Laser metrology

Cam alignments

Turbocharger troubleshooting, removal and installation

Casting repair, field machining, valve seat machining, etc.

Technical bolting services

Foundation and grout services

PMs/inspections

Oil flushing

In-place crankshaft repair

I&E

24/7 callout service available

EQUIPMENT SERVICED

Reciprocating compressors

Integral compressors

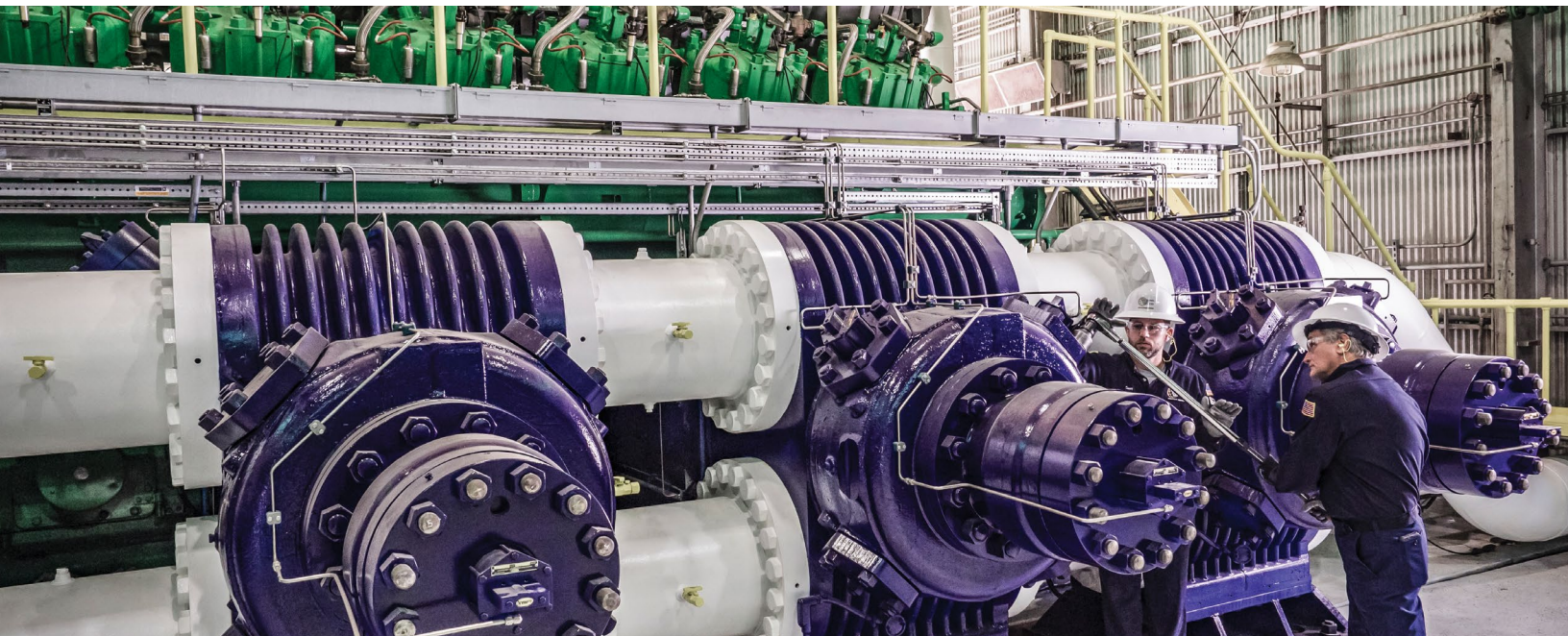
Drive engines

Turbochargers

Lube oil systems

Cooling systems

Inlet filtration system





 ROTATING EQUIPMENT & TURBOMACHINERY	 ENGINES & RECIPROCATING COMPRESSORS	 MECHANICAL & HEAT EXCHANGERS
 PIPING & SPECIALTY WELDING	 TOWERS	 FIELD MACHINING & TECHNICAL BOLTING
 INSTRUMENT & ELECTRICAL	 VALVE SOLUTIONS	 REPAIR & FABRICATION SHOP SERVICES
 TANK SOLUTIONS		 ENGINEERED SOLUTIONS

4460 Highway 225, Deer Park, Texas 77536

UniversalPlant.com 800.479.6881